

# Solibri Model Checker



## SMC is used by:

- **Building owners and facility managers** checking design proposals against BIM guidelines, program requirements, cost and energy budgets, and security requirements
- **Construction companies** checking that building models have valid and sufficient data to support cost estimating, scheduling and project planning
- **Architects** checking model integrity and completeness according to internal and/or customer standards before sending models to clients
- **Structural engineers** checking their models for consistency with architect's design
- **MEP engineers** looking to optimize duct/pipe routing and avoid clashes with other elements and disciplines
- **Design teams** cross-checking their designs by merging models into one environment

### Solibri, Inc.

Itälahdenkatu 21A  
00210 Helsinki Finland  
Email: [sales@solibri.com](mailto:sales@solibri.com)  
Phone: +358 10 5486801  
Fax: +358 10 5486806

### Solibri LLC

17470 N. Pacesetter Way  
Scottsdale, AZ , USA 85255  
Email: [sales-us@solibri.com](mailto:sales-us@solibri.com)  
Phone: 480 305 2120  
Fax: 480 945 9820

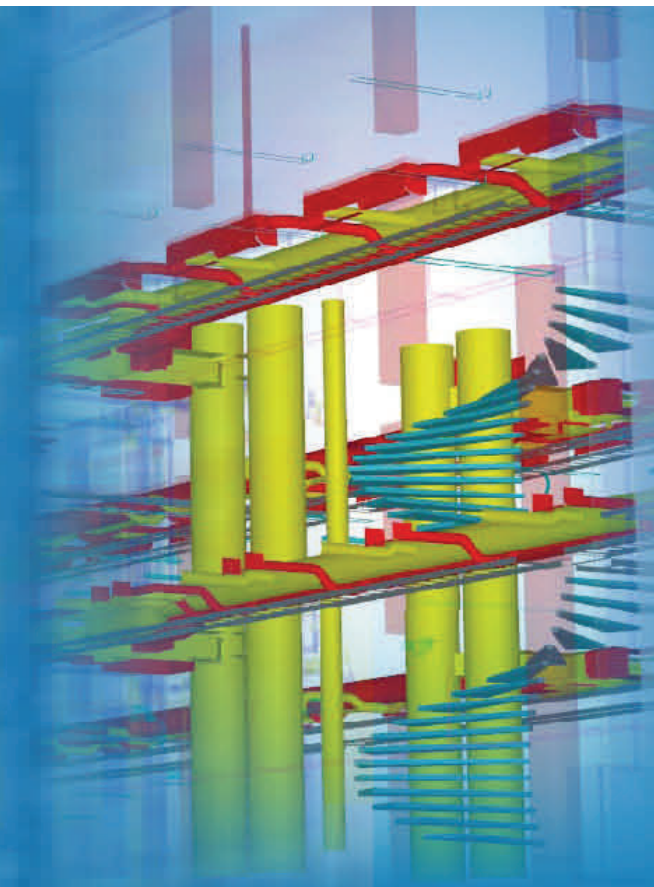
**Solibri, Inc.** was established in 1999 to develop and market solutions that improve the quality of Building Information Models and make the entire design process more productive. Our global customer base includes building owners, construction companies, architects and engineers.



# Solibri Model Checker V5.1

Elevates the POWER of model analysis to a new level

- Quality Assurance
- Space Usage
- BIM Validation
- Design Intent Validation
- Model Version Comparison
- Spatial Coordination
- Code Compliance
- Quantities/Volumes
- Egress Analysis
- Pre Check for Energy Analysis



## SMCv5.1 Dramatically Improves the Issue Identification and Resolution Process

Solibri Model Checker (SMC) analyzes the building information model and reveals potential problems. It can also be used for spatial coordination to check conformance to BIM standards - be they national or local, client driven, or even an organization's own best practices. Building models can easily be checked throughout the entire development process.

## Solibri Model Checker for Design Intent and BIM Validation

Solibri Model Checker includes a comprehensive set of general purpose rules that can be customized by the user. It is also possible to easily create new, company-specific rules. The models are then analyzed by applying the desired rule sets.

## Quality Assurance

SMCv5.1 is an excellent tool for creating internal quality assurance programs. Models can be checked for consistency and accuracy relative to established guidelines.

## Design Coordination between Versions and Disciplines

SMC can import and show several IFC and DWG files at the same time (e.g. models from the architect, structural engineer, and mechanical engineer). Model version comparison rules highlight the changes between different versions of the same design. SMC can verify that elements in a structural model are in the same location they would occupy in the architectural model.

## Spatial Coordination

SMC's collision detection tools organize the results by discipline, type, severity and location. You can see all building services components intersecting with a slab; or by using SMC'S dynamic sectioning tools, you can isolate and view only those issues within specific locations in the model. The SMC Coordination Report serves as a powerful collaborative resolution and feedback tool for the entire project team.

## Code Compliance

SMC supports recognized codes including ADA/ABA and ANSI 117.1. Additional codes can be converted to rule sets and applied to the BIM.

## Quantities and Volumes

SMC allows you to search, filter and generate quantity take-off reports directly from the model to .xls format. Object quantity and volume information is dynamically presented in the model and information windows.

## Egress Analysis

SMC allows you to define, check and report results of multiple egress routes. These routes could be fire exits, distance to critical services or large venue exit options.

